



THE CAYMAN ISLANDS' FOREIGN TRADE STATISTICS REPORT 2007

APRIL 2008



THE ECONOMICS AND STATISTICS OFFICE
PORTFOLIO OF FINANCE AND ECONOMICS

**FOREIGN TRADE STATISTICS
OF THE CAYMAN ISLANDS
2007**

CONTENTS

	Page
INTRODUCTION	3
COMMENTARY ON TRADE 2007	6
CHARTS	
1. Annual Imports 2000-2007	6
2. Imports by Broad Economic Category 2007	7
3. Imports by SITC 2007	8
TABLES	
1. Imports, Exports and Balance of Visible Trade, 1990-2007	10
2. Imports by Quarter, 2000-2007	11
3. Imports by Broad Economic Category, 2000-2007	12
4. Imports by UN SITC Classification, 2001-2007	13
4A. Imports by SITC Sections, 2000-2007	24
5. Quantities and Average CIF Unit Values for Selected Imports, 2000-2007	25
6. Imports by Major Countries of Origin, 2000-2007	27
7. Imports by Port: CUS\$ Million and Percent of Total Imports, 2000-2007	29
8. Exports, 2003-2007	30

INTRODUCTION

1. This set of foreign trade statistics is produced by the Trade Statistics subsection of the Economics and Statistics Office (ESO). As in most other countries, the trade statistics in this Report are compiled from computerized records maintained by the customs department. The records are based on documents which are completed by importers, exporters or their agents, who are obliged to record the appropriate statistical code number against each commodity using the Cayman Islands Tariff Code (CITC). The CITC is based upon the system recommended by the Customs Cooperation Council (CCC) and which directly links to the United Nations Standard International Trade Classification (SITC Revision 3) used in all trade statistics publications.
2. The task of the ESO is mainly to incorporate and check the credibility of the data, and classify them into tables that can be useful for analysis.
3. One of the key basis for preparing statistical tables is the correct coding of commodities. In the Cayman Islands where a number of importers do not provide codes, or are providing improper codes, this has been and still is a problem. Over the years, this issue would entail the ESO staff concerned to check whether proper codes have been used in the documents; or if the codes were absent, to provide the codes. The volume of imports has grown to such an extent that it would take more than a year to fully check all of customs documents. The last year to be fully coded was 1981 (which was published 4 years later in 1985), and for the years from 1982 to 1990 only a sample of documents have been fully coded using a simplified commodity coding system (see below). Moreover, given the volume of imports, full details of the quantity and value of all imports will require an upgraded administrative system based at the Customs Department. At present, only a proportion of commodities have both quantity and value of imports.

Simplified System of Import Statistics for 1982 - 1990

4. The key objective of the abovementioned system was the production of an estimate of total trade with as much detail that could be generated by the available limited resources. From 1982, the total value of imports was determined for each port from Customs cash books. All high value documents (over \$25,000 or so) and a sample of low value customs documents were coded and scaled up to the control total for each port. Furthermore, for large regular importers (where the invoices attached to the warrants are extremely detailed), a series of standard percentages for commodities were established and used instead of fully coding each warrant.
5. Another simplification was to reduce the number of commodity headings in the Cayman Islands' Tariff classification from 400 descriptions to about 110. This was achieved

by combining the lower value headings into wider groupings. Around 50 of the most important headings were retained. These headings, like those which they replaced, are defined in terms of the Standard International Trade Classification (SITC Rev3), and from 1991 the headings were amended slightly to match the new "Revision 3". These SITC codes enable the figures for the Cayman Islands to be compared with those for other countries at the two digit Division SITC code level.

6. The advantages of the simplified system have been somewhat eroded since 1982 by the increasing number of documents, given that the number of staff who can verify the coding has been severely limited. Moreover, there was also a need to change the data processing system to make it more efficient. Hence, in 1989 and 1991, reductions in the processing burden, including halving the sample of low-value consignments, were made. Sampling naturally reduces the precision of the estimates but this loss had been limited by the reduction in the number of commodity headings used.

Conversion to the Harmonized System of Classification

7. In 1991, the Cayman Islands adopted a hybrid version of the Harmonized System of Classification which along with the SITC Rev3 is the basis for classification and reporting in this report. This system of classification gives more detail than in previous years but is still beset by issues mainly due to administrative weaknesses in using the appropriate codes for the various commodities. In this report, an attempt has been made to compare current imports with imports from previous years where possible. From the year 2000, only the computerized customs system is used by ESO and no checks on the warrants are made.

Export Statistics

8. From the beginning of 1986, documents for goods for export (or re-export such as for repair) have been required by the Customs Department. Prior to 1986, the value of exports from the Cayman Islands has been assumed at around \$1.0 million each year during 1982-1984, and a little higher for 1985. The statistics for 1986 and succeeding years from the export entries lodged with the Customs Department. However, many of these export entries have no stated value, and estimates still had to be made.

Table 8 (see page 30) is a new table that shows the value of all exports by SITC sections. This data set, previously unavailable, were partly obtained from statistical agencies in the US and the UK. It includes domestic exports and re-exports, which are goods imported and subsequently exported without undergoing any significant change or other value added activities. As a result of this new data set, all export figures for 2003–2007 in Table 1 on page 10 were revised.

Coverage

9. This report covers merchandise trade only. Trade in services are not included.
10. Included in import and export statistics in this publication are goods sent abroad and returned for repair and goods re-exported as incorrect or faulty since they cannot be easily identified at the time of import. Excluded are goods in transit or other trans-shipments not destined for the Cayman market (e.g. lobster tails trans-shipped to Florida); and parcel post exports for which no records are kept. Goods brought into the country directly by residents that are not declared are also excluded.
12. The values recorded for import statistics are CIF (Cost, Insurance and Freight) - they are based on the values declared by importers and accepted by Customs, but they do not include import duties or other local costs. Exports are valued FOB (Free on Board) - that is, the cost of delivery to the docks excluding onward freight and insurance costs.
13. The values recorded for imports and exports over a particular period represent the documents brought to account by Customs during that period, and they will therefore include some goods actually arriving towards the end of the previous period.

Abbreviations, rounding and symbols

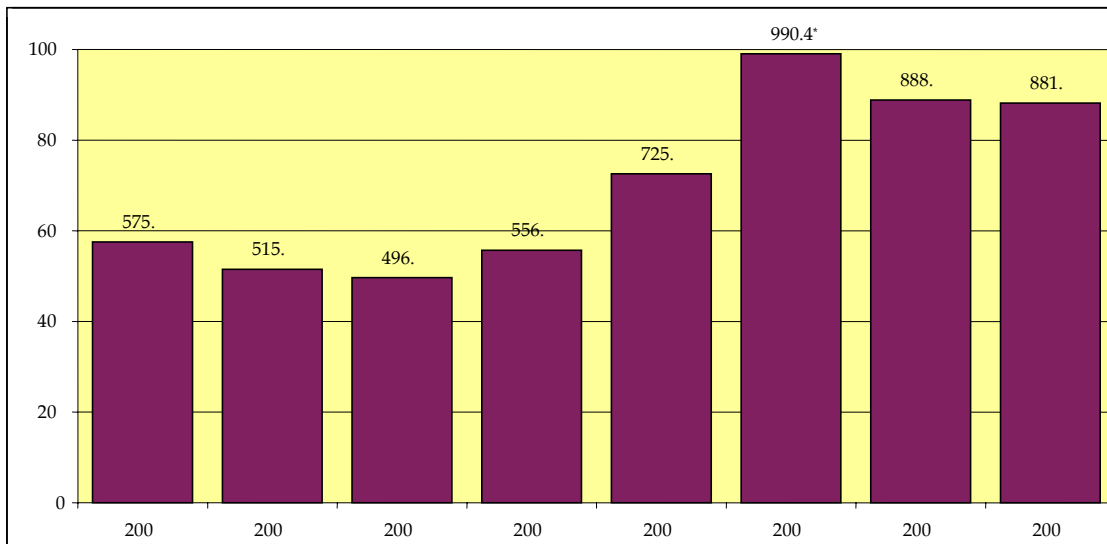
14. In tables where figures have been rounded to the nearest final digit there may be an apparent slight discrepancy between the sum of the constituent items and the total as shown.

- CIF** - Cost, Insurance and Freight
Value including insurance and freight charges
- FOB** - Free on Board
Value excluding insurance and freight charges
- SITC** - Standard International Trade Classification
(Revision 3 is used in this publication)
- HS** - Cayman Islands Simplified Harmonized System of
Classification.
- ..** - not available
- - nil or negligible
(less than half the final digit shown)
- NES or nes** - not elsewhere specified

COMMENTARY ON 2007

15. The total value of goods imported in 2007 amounted to CI\$881.8 million (US\$1.049 billion). This represents a decrease of CI\$6.9 million (or 0.8%) compared to 2006. Total imports excluding oil imports amounted to CI\$779.6 million, or 5.1 percent lower compared to 2006. (See Table 1 on page 10 and Chart 1 below).

Chart 1: Annual Imports (CIF in CI\$ Million), 2000-2007



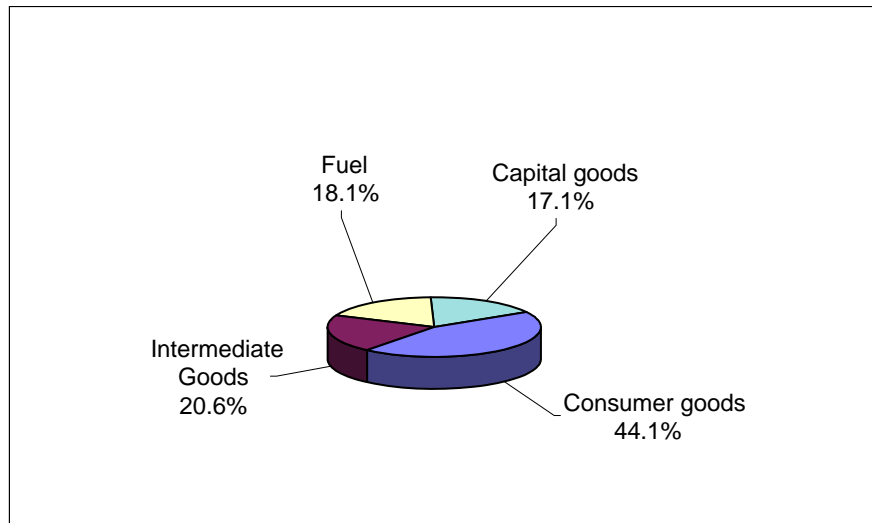
*The high import figure in 2005 is due to reconstruction after Hurricane Ivan in 2004.

16. Exports in 2007 amounted to CI\$21.5 million. The visible trade deficit was therefore CI\$860.3 million, down from CI\$867.8 million in 2006 (See Table 1 on page 10).

17. Imports in 2007 decreased in the first and third quarters, compared to the previous year (see Table 2 on page 11).

18. Table 3 (see page 12) and Chart 2 show the merchandise imports in 2007 by broad economic category (consumer goods, intermediate goods, capital goods and fuel). This exercise was limited by the presence of unclassified imports which were subsequently classified by assuming that they could be proportionately distributed across the given major groupings. The results show that in 2007, capital goods comprise 17.1 percent of imports; consumer goods, 44.1 percent; intermediate goods, 20.6 percent; and fuel, 18.1 percent.

Chart 2: Percentage of Imports by Broad Economic Category, 2007



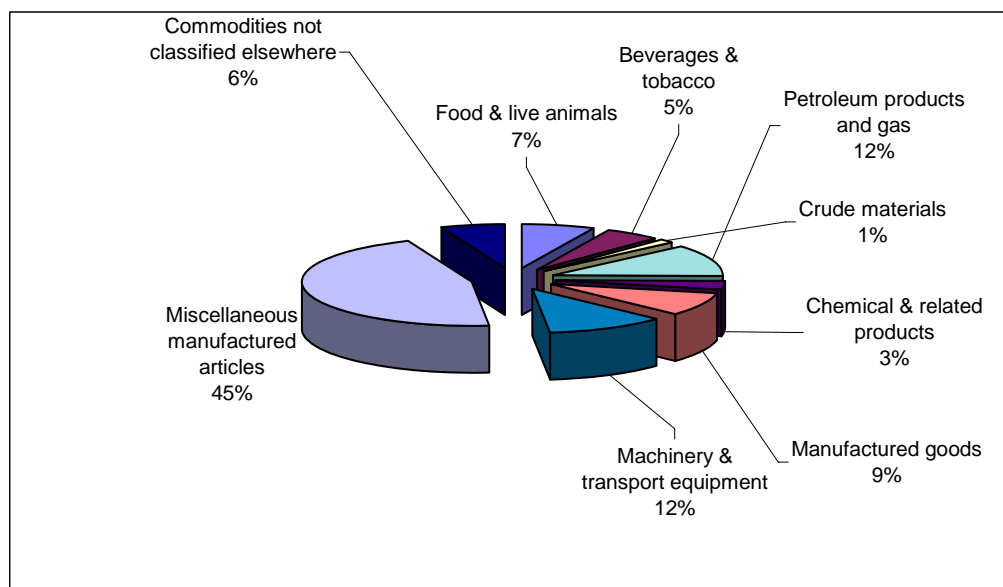
19. Table 4 (see pages 13-23) shows a detailed classification of imports based on the UN Standard International Trade Classification. A summary of this classification is shown in Chart 3 and Table 4A (see page 24).

As in previous years, the most serious limitation of Tables 4 (see pages 13-23) and 4A (see page 24) is the improper classification of imports. In 2007, these amounted to CI\$53.0 million or 6.0 percent of total imports, an improvement over the 9.1 percent recorded in 2006. It should be noted that some large changes between years in table 4 are due to classification changes.

Under SITC code 900 (see Table 4 page 22) items 0001-0020 from the customs first schedule are listed and are exempt from custom duties for a variety of reasons. Also listed under SITC code 900 is 9999, which is a generic code for duty-free items. The figures for the past three years have been reduced due to a reclassification of goods to their proper tariff heading.

20. Table 5 (see pages 25-26) shows quantities and average CIF unit values for selected imports from 2000-2007. It shows, for instance, that the unit price of fuels increased in 2007 to 2.06 per imperial gallon compared to 1.88 in 2006.

Chart 3: Imports by SITC 2007



21. Import figures by major countries of origin are presented in Table 6 (see pages 27 & 28). It shows the continued dominance of the USA as source of imports into the Cayman Islands as it accounted for 74.6 percent of total imports. The Netherlands Antilles was second overall with CI\$74.0 million or 8.4 percent. Japan ranked third with CI\$7.3 million or 0.8 percent of total imports. The United Kingdom and Jamaica tied for fourth, with CI\$5.5 million or 0.6 percent of total imports.

22. Table 7 (see page 29) shows the value of imports by port of entry. The majority (76.9%) of imports in 2007 continued to enter through George Town Docks. Imports through Owen Roberts Airport fell from CI\$170.0 million in 2006 to CI\$88.6 million in 2007. Table 7 (see page 29) also shows the total amount of duty-free imports which reached CI\$59.8 million in 2007, or 6.8 percent of total imports. This level represents a reduction compared to CI\$84.2 million in 2006 or 9.5 percent of total imports.

-
23. Table 8 (see page 30) presents the revised exports data mainly due to new data sets obtained for exports to the USA and the UK. Total exports in 2007 amounted to CI\$21.5 million comprising of CI\$8.7 million domestic exports and CI\$12.8 million re-exports. Total exports in 2007 was 2.6 percent higher compared to 2006.

**TABLE 1: IMPORTS, EXPORTS AND BALANCE OF VISIBLE TRADE
1990-2007**

CIS\$ millions

	Imports (CIF)	Yr/Yr % change	Exports ¹ (FOB)	Yr/Yr % change	Balance ² of Trade
1990	239.7	11.2	3.1	47.6	-236.6
1991	222.9	-7.0	2.5	-19.4	-220.4
1992	278.4	24.9	3.7	48.0	-274.7
1993	261.1	-6.2	1.8	-51.4	-259.3
1994	272.9	4.5	2.0	11.1	-270.9
1995	332.5	21.8	3.4	70.0	-329.1
1996	314.9	-5.3	2.2	-35.3	-312.7
1997	428.4	36.0	1.8	-18.2	-426.6
1998	448.2	4.6	1.0	-44.4	-447.2
1999	471.7	5.2	1.2	20.0	-470.5
2000	574.9	21.9	3.2	166.7	-571.7
2001	514.5	-10.5	3.5	9.4	-511.0
2002	496.0	-3.6	2.3	-34.3	-493.7
2003	555.9	12.1	19.5	747.8	-536.4
2004	724.7	30.4	19.8	1.5	-704.9
2005	990.4	37.3	48.6	145.5	-946.7
2006	888.7	-10.7	20.9	-57.0	-867.8
2007	881.8	-0.8	21.5	2.9	-860.3

Notes:

- ¹ From 1982 export figures include personal effects and cars of migrants. These are included in all years for imports. Export figures from 2003-2007 are based on new data and include domestic exports and re-exports. These new data consists of import figures from the US Census Bureau and the UK Trade information website. There is an increase from C1\$2.3 million in 2002 to C1\$19.5 million in 2003. The reason for this large increase in 2003 is due to ESO obtaining additional data from the USA and UK to add to the data from the customs system.
- ² Exports for 1998-2000 are estimated.

**TABLE 2: IMPORTS BY QUARTER
2000-2007**

CIS\$ millions					
YEAR	JAN - MAR	APR - JUN	JUL - SEP	OCT - DEC	TOTAL
2000	133.7	160.7	140.5	140.0	574.9
2001	132.5	130.2	126.3	125.7	514.7
2002	114.8	122.4	123.0	135.8	496.0
2003	121.3	132.9	130.4	171.3	555.9
2004	169.8	175.1	135.8	244.0	724.7
2005	275.3	250.4	229.5	235.2	990.4
2006	224.0	226.2	223.2	215.3	888.7
2007	212.3	235.8	210.0	223.8	881.8
Percent:					
2000	23.3	28.0	24.4	24.4	100
2001	25.7	25.3	24.5	24.4	100
2002	23.1	24.7	24.8	27.4	100
2003	21.8	23.9	23.5	30.8	100
2004	23.4	24.2	18.7	33.7	100
2005	27.8	25.3	23.2	23.7	100
2006	25.2	25.5	25.1	24.2	100
2007	24.1	26.7	23.8	25.4	100
2000-2007 average	24.3	25.2	23.5	26.9	100

**TABLE 3: IMPORTS BY BROAD ECONOMIC CATEGORY
2000-2007**

	CIS million							
	2000	2001	2002	2003	2004	2005	2006	2007
CONSUMER GOODS								
Total	285.4	254.9	260.6	302.6	281.4	346.8	401.4	389.2
Food and Beverages	106.3	91.4	93.6	128.3	136.0	166.1	214.0	218.1
Clothing and footwear	11.3	7.5	10.5	11.4	10.1	15.1	16.2	16.0
Other	167.8	156.0	156.5	162.9	135.3	165.6	171.2	155.1
INTERMEDIATE GOODS								
Total	86.8	73.5	49.6	77.1	133.6	257.8	161.3	181.8
Construction	21.6	13.2	7.9	27.1	66.5	160.5	91.1	98.5
Others	65.2	60.3	41.7	50.0	67.1	97.3	70.2	83.3
FUEL								
Total	82.7	95.4	102.4	73.3	114.8	123.6	131.6	160.0
CAPITAL GOODS								
Total	120.0	90.7	83.4	103.0	194.9	262.2	193.2	150.8
Transportation	89.6	73.0	68.1	76.1	133.0	206.4	142.1	100.6
Others	30.4	17.7	15.3	26.9	61.9	55.8	51.1	50.2
ALL IMPORTS	574.9	514.5	496.0	556.0	724.7	990.4	887.5	881.8
Percent								
CONSUMER GOODS								
Total	49.6	49.5	52.5	54.4	38.8	35.0	45.2	44.1
Food and Beverages	18.5	17.8	18.9	23.1	18.8	16.8	24.1	24.7
Clothing and footwear	2.0	1.4	2.1	2.1	1.4	1.5	1.8	1.8
Other	29.2	30.3	31.6	29.3	18.7	16.7	19.3	17.6
INTERMEDIATE GOODS								
Total	15.1	14.3	10.0	13.9	18.4	26.0	18.2	20.6
Construction	3.8	2.6	1.6	4.9	9.2	16.2	10.3	11.2
Others	11.3	11.7	8.4	9.0	9.3	9.8	7.9	9.4
FUEL								
Total	14.4	18.5	20.6	13.2	15.8	12.5	14.8	18.1
CAPITAL GOODS								
Total	20.9	17.6	16.8	18.5	26.9	26.5	21.8	17.1
Transportation	15.6	14.2	13.7	13.7	18.4	20.8	16.0	11.4
Others	5.3	3.4	3.1	4.8	8.5	5.6	5.8	5.7
ALL IMPORTS	100.0	100.0	100.0	100.0	100.0	100.0	100.0	100.0

**TABLE 4: IMPORTS BY UN SITC CLASSIFICATION
2000 - 2007**

			Ct\$ thousands							
SITC Rev.3	Tariff Code	COMMODITY	2000	2001	2002	2003	2004	2005	2006	2007
0: FOOD AND LIVE ANIMALS										
00		LIVE ANIMALS EXCEPT FISH	124	93	155	172	103	176	465	167
001	0101	Live animals other than fish or turtle	22	14	16	58	36	49	213	75
	0121	Poultry, live	59	66	103	66	38	39	156	33
	0131	Birds, live (pets)	13	6	14	12	21	34	20	12
	0132	Other domestic pets (Not fish)	31	7	23	35	8	54	76	47
01		MEAT AND MEAT PREPARATIONS	7,232	4,460	3,898	8,166	10,159	10,564	7,549	10,910
011	0201	Beef; fresh, chilled, frozen	279	102	1,068	2,654	3,147	1,737	261	768
016	0202	Salt beef	112	104	59	88	43	122	29	27
012	0211	Poultry carcasses and parts	2,550	1,227	1,053	2,768	5,135	4,779	2,631	4,125
012	0221	Other edible meats	3,011	2,451	1,465	2,169	1,220	3,067	3,437	2,517
017	1601	Prepared meats and poultry	1,282	575	253	487	614	859	1,191	3,473
02		DAIRY PRODUCTS & EGGS	3,326	2,614	2,490	3,607	7,238	8,183	4,591	8,052
022	0401	Milk & cream, fresh, evap.	870	1,559	1,316	1,710	3,999	4,948	1,988	2,603
	0403	Flavored milk,yogurt,ice cream	1,923	433	444	730	916	1,062	1,105	2,779
023	0411	Butter, natural, fresh or salted	133	142	106	163	332	194	217	141
024	0421	Cheese	351	349	377	480	1,280	1,389	762	1,346
025	0431	Birds' eggs, egg yolks	48	131	247	523	711	589	520	1,183
03		FISH & PREPARATIONS	3,799	2,845	2,912	3,769	3,943	4,055	6,239	6,816
034	0301	Fish; fresh, frozen, dried	2,042	1,424	1,528	1,875	2,268	2,424	3,665	4,331
035	0302	Crustaceans, mollusc,shellfish	1,544	1,283	1,336	1,654	1,605	1,450	1,895	1,942
036	0321	Turtle, live	-	3	-	-	-	0	20	12
034	0331	Fish, live pets	76	35	27	50	35	77	332	103
037	1602	Fish, etc.; prepared, cooked, processed	137	99	20	190	35	103	327	428
04		CEREALS & PREPARATIONS	4,875	2,858	1,672	2,682	4,484	5,621	3,842	7,553
041	1001	Grains, natural or husked, broken	48	36	32	49	349	636	175	1,121
045	1011	Macaroni & spaghetti etc., raw	64	89	57	53	202	296	152	251
046	1901	Breakfast cereals	678	572	537	886	1,221	1,212	1,673	4,048
048	1921	Bakery products, inc. biscuits	3,567	1,838	615	780	987	1,417	791	1,230
	1905	Bread loaves whole or sliced	-	-	105	47	501	402	523	650
	1999	Cereals & preparations n.e.s.	518	323	326	867	1,223	1,659	528	254

FOREIGN TRADE STATISTICS REPORT 2007

TABLE 4: IMPORTS BY UN SITC CLASSIFICATION (continuation)
2000 - 2007

			Ct\$ thousands							
SITC Rev.3	Tariff Code	COMMODITY	2000	2001	2002	2003	2004	2005	2006	2007
05		VEGETABLES AND FRUIT	8,147	5,467	7,606	9,796	11,264	12,638	15,719	21,005
054	0701	Potato,onion & shallot; fresh	230	123	584	1,247	1,700	1,499	2,301	2,483
054	0709	Other vegetables, fresh/frozen	3,238	3,304	4,736	5,136	5,668	5,040	5,660	3,612
054	0721	Peas & beans, dried	45	126	37	27	75	91	26	110
056	0731	Other vegetables: dried,pickled,canned	579	296	1,435	734	507	1,785	2,577	1,202
057	0801	Fruit, fresh or frozen	2,916	1,070	206	1,064	1,684	1,738	2,142	4,437
058	0821	Fruits, nuts; dried & prepared	81	2	1	44	65	89	32	198
059	0831	Unfermented juices	1,059	546	607	1,543	1,566	2,395	2,983	8,963
06		SUGAR, SUGAR PREPARATIONS & HONEY	428	343	400	482	466	598	860	848
061	1701	Beet & cane sugar,raw	59	80	67	75	118	135	220	226
061	1711	Beet & cane sugar refined	212	134	175	196	227	326	309	262
061/062	1721	Honey, syrups, sugar, confection.	156	128	158	211	121	138	331	360
07		COFFEE,TEA,COCOA,SPICES	777	695	528	658	1,354	1,269	1,401	1,370
071	0901	Coffee,fresh, ground etc.	378	360	381	372	730	855	829	775
072	0921	Cocoa & drinking chocolate	30	56	33	31	63	72	100	43
073	1801	Chocolate & confectionery	159	93	13	92	212	98	92	201
074	0911	Tea & tea concentrates	176	86	100	119	199	243	375	341
075	0931	Pepper,vanilla,pimento,spices	33	100	1	45	149	1	4	11
08		ANIMAL FEED STUFFS	810	521	539	789	1,115	1,357	1,134	1,149
081	2301	Animal feeds, compound	523	300	391	675	886	1,037	1,002	1,003
	2302	Pet food	287	220	148	114	228	320	132	146
09		MISCELLANEOUS EDIBLE PRODUCTS	178	824	4,180	13,820	18,301	8,807	3,077	3,155
091	1511	Margarine	14	74	25	55	117	108	147	111
	1521	Shortening	3	1	33	44	11	0	-	2
098	2101	Baking powders, prepared	60	18	-	3	43	115	51	140
	2199	Misc. edible products	102	73	4,121	13,713	18,116	8,553	2,876	2,894
	1501	Lard	-	-	1	5	13	30	2	8
ALL FOOD AND LIVE ANIMALS			29,696	20,719	24,379	43,941	58,426	53,267	44,877	61,025

FOREIGN TRADE STATISTICS REPORT 2007

TABLE 4: IMPORTS BY UN SITC CLASSIFICATION (continuation)
2000 - 2007

C1\$ thousands

SITC Rev.3	Tariff Code	COMMODITY	2000	2001	2002	2003	2004	2005	2006	2007
1: BEVERAGES AND TOBACCO										
11		BEVERAGES	16,292	21,057	17,236	23,431	16,510	32,044	40,047	43,082
111		Water								
	2201	Natural drinking water	639	452	282	669	861	1,110	1,128	3,325
	2202	Aerated water	379	455	276	545	602	698	549	687
111		Flavored,carbonated & other non-alcoholic drinks								
	2211	Flavored aerated water	1,966	1,396	1,585	2,080	3,111	3,550	3,754	3,809
	2212	Still non-alcoholic beverages	43	56	81	179	21	174	111	209
	2221	Beer, ale & stout <7% alcohol	5,072	4,966	4,455	4,309	2,361	6,049	5,143	4,802
	2222	Ciders & meads	1	1	-	-	-	-	0	-
	2223	Wine coolers <7% alcohol	56	199	140	610	42	287	20	29
	2231	Table wines	3,388	4,207	3,853	2,347	1,745	2,483	3,538	2,788
	2232	Dessert wine & sherry <30% alcohol	78	91	97	76	44	96	166	153
	2233	Champagne	2,707	7,248	4,387	10,228	6,261	14,636	20,769	22,791
	2234	Other sparkling wines	144	167	109	68	43	64	114	76
	2241	Spirits unsweet. < 50%	1,289	1,192	1,295	1,647	898	2,101	3,240	2,926
	2242	Spirits unsweet. > 50% alcohol	157	183	262	155	191	213	321	205
	2243	Sweetened spirits, liqueurs	372	442	416	517	329	582	1,194	1,281
12		TOBACCO & MANUFACTURES	276	277	298	3,594	629	3,029	4,300	3,755
122	2401	Manufactured tobacco, cigarettes	209	246	217	902	307	538	763	745
	2402	Manufactured tobacco, cigars	64	30	67	2,677	315	2,474	3,527	2,997
	2403	Manufactured tobacco-for chewing	3	0	14	15	8	18	11	14
ALL BEVERAGES AND TOBACCO			16,568	21,334	17,534	27,025	17,139	35,073	44,347	46,837
2: INEDIBLE CRUDE MATERIALS, EXCEPT FUELS										
24		CORK AND WOOD	3,129	1,393	1,796	3,036	5,545	7,238	6,242	5,189
248	4401	Wood, lumber	2,978	1,347	1,664	2,927	4,925	6,951	6,007	5,153
244	4402	Cork and other wood	152	46	132	109	620	286	234	37
27		CRUDE FERTILIZERS AND MINERALS (EXC. FUELS AND PRECIOUS STONES)	463	338	884	1,158	995	3,400	2,065	3,398
272	3101	Crude fertilizers	86	58	99	129	92	99	147	247
	2599	Crude minerals (exc.fuels & stone)	310	163	569	521	9	202	49	23
278	2501	Common salt	57	18	13	59	130	160	101	141
	2521	Prepared pottery clay	10	10	14	11	22	29	13	26
28		Metalliferrous ores & metal scrap								
	9901	Raw semi-processed mats. n.e.s.	-	89	190	438	742	2,909	1,754	2,961

TABLE 4: IMPORTS BY UN SITC CLASSIFICATION (continuation)
2000 - 2007

			Ct\$ thousands							
SITC Rev.3	Tariff Code	COMMODITY	2000	2001	2002	2003	2004	2005	2006	2007
29		CRUDE ANIMAL AND VEGETABLE MATERIALS N.E.S.	1,903	579	701	977	934	3,042	2,934	2,650
292	0601	Live trees, plants, bulbs, etc.	1,318	251	33	9	37	62	95	35
	1499	Crude vegetable materials n.e.s.	2	7	1	18	22	1	3	2
291	0599	Products of animal origin	3	10	4	2	2	-	0	1
292	0611	Cut flowers & foliage	566	306	377	468	459	659	1,141	1,084
292	1201	Seeds	15	5	12	1	19	43	8	9
	0602	Other live plants	-	-	273	478	395	2,277	1,687	1,518
<u>ALL INEDIBLE CRUDE MATERIALS EXCEPT FUELS</u>			5,496	2,310	3,381	5,171	7,474	13,680	11,240	11,237
3: MINERAL FUELS, LUBRICANTS AND RELATED MATERIALS										
32	2741	COAL, COKE & BRIQUETTES	1	-	-	-	-	-	-	-
33		PETROLEUM & PRODUCTS	39,602	48,349	49,586	42,075	69,506	74,792	67,927	100,801
	2714	Bitumen, asphalt, natural tar, sand	-	-	-	-	-	-	-	-
334	2701	Motor gas	8,218	12,729	15,436	13,299	21,730	19,920	17,542	24,804
	2711	Aviation gas	129	165	135	70	205	600	59	248
334	2712	Aviation jet fuel	5,487	5,296	2,692	1,042	5,745	5,590	2,712	1,636
334	2702	Diesel oil	25,480	29,903	26,470	27,218	41,297	47,851	46,753	73,032
335	2731	Other petroleum products & related materials	276	255	192	440	512	819	855	1,071
	2703	Diesel oil imported for supply to an undertaker	-	-	4,660	-	-	-	-	-
334	2721	Lamp oil	12	1	1	6	18	12	5	9
34	2751	GAS, natural & manufactured	650	1,072	818	1,096	1,096	1,428	2,109	2,109
<u>ALL MINERAL FUELS, LUBRICANTS AND RELATED MATERIALS</u>			40,253	49,420	50,405	43,171	70,601	76,220	70,035	102,910
4: ANIMAL AND VEGETABLE OILS, FATS AND WAXES										
			55	40	18	1	131	36	5	164
41	1599	ANIMAL OILS & FATS	10	9	-	0	0	6	5	106
42/43	1531	FIXED VEG.OILS & FATS	45	32	18	0	131	30	0	58
<u>ALL ANIMAL AND VEGETABLE OILS, FATS AND WAXES</u>			55	40	18	1	131	36	5	164

FOREIGN TRADE STATISTICS REPORT 2007

**TABLE 4: IMPORTS BY UN SITC CLASSIFICATION (continuation)
2000 - 2007**

			CIS\$ thousands							
SITC Rev.3	Tariff Code	COMMODITY	2000	2001	2002	2003	2004	2005	2006	2007
5: CHEMICALS AND RELATED PRODUCTS N.E.S.										
51		ORGANIC CHEMICALS	47	31	26	31	34	83	31	123
	2999	Organic chemicals n.e.s.	47	31	26	31	34	83	31	123
52		INORGANIC CHEMICALS	311	271	525	560	194	148	224	47
	2801	Inorganic chemicals n.e.s.	40	23	10	29	63	34	100	47
	3402	Washing Soda	271	248	514	530	132	113	125	
53		DYEING, TANNING, COLORING MATERIALS	1,138	579	546	1,133	1,338	3,287	2,499	2,723
533	3201	Household paints, varnishes, lacquers & dyes for retail dyeing, tanning & others coloring materials	1,026	552	451	1,052	1,194	3,175	2,333	2,521
	3203	Ceramic colors, glazes and frits			39	0	19	7	6	1
	3202	Bleaches	112	27	56	81	126	104	160	201
54		MEDICINAL & PHARMACEUTICAL PRODUCTS	4,302	3,153	4,316	5,342	6,522	7,486	7,244	7,792
	2901	Insulin, quinine etc.	18	12	22	17	30	11	40	28
	2903	Vaccines, serums, anti-toxins, lymph	28	47	46	105	103	108	79	42
	3001	Medicinal, pharmaceutical goods n.e.s.	4,256	3,094	4,249	5,220	6,389	7,368	7,126	7,723
55		ESSENTIAL OILS & PERFUME MATERIALS; TOILET POLISHING & CLEANSING PREPARATIONS	5,065	3,266	4,888	6,287	7,653	9,648	10,826	12,057
553	3301	Bay rum & bay waters	1	-	0	0	0	0	42	1
553	3302	Perfume	63	21	7	4	29	19	44	34
553	3303	Perfumery, not perfume	2,128	1,306	2,241	2,342	2,878	3,634	4,199	3,733
553	3309	Other toilet prep. & cosmetics	1,041	683	1,117	1,631	1,869	2,727	1,095	2,465
554	3401	Soap	1,348	1,009	1,363	2,031	2,524	2,773	4,805	4,691
	3403	Detergents	443	236	159	279	346	463	605	1,046
	3409	Washing preparations, cleansers	41	11	1	-	6	31	35	87
56	3111	FERTILIZERS,	64	51	39	93	144	408	272	229
57	3901	PLASTICS IN PRIMARY & SEMI-PROCESSED FORM (INC. PVC TUBING)	50	14	2	77	79	11	26	25
59		CHEMICAL MATERIALS & PRODUCTS NES	411	552	185	641	851	980	4,972	4,539
593	3601	Explosives & pyrotechnic products	137	229	46	563	515	662	766	810
	3801/11	Disinfectants, insecticides, fungicides, vermin poisons etc. ¹	227	299	93	78	137	226	4,138	3,476
59	3899	Misc. chemical prod., n.e.s.	46	24	46	-	200	92	69	253
ALL CHEMICALS & RELATED PRODUCTS N.E.S.			11,390	7,916	10,526	14,164	16,816	22,051	26,093	27,536

TABLE 4: IMPORTS BY UN SITC CLASSIFICATION (continuation)
2000 - 2007

Cl\$ thousands

SITC Rev.3	Tariff Code	COMMODITY	2000	2001	2002	2003	2004	2005	2006	2007
6: MANUFACTURED GOODS CLASSIFIED CHIEFLY BY MATERIAL										
61	4201	LEATHER, LEATHER MANS N.E.S.	38	25	96	149	126	89	97	199
62	4001	RUBBER MANUFACTURES N.E.S.	826	544	9	2	50	8	27	25
	4011	Tires of rubber for vehicles, bikes etc.	-	-	1,602	2,156	2,222	3,678	3,064	3,578
63		CORK AND WOOD MANS.(EX.FURNITURE)	1,228	761	645	1,702	3,203	4,998	3,181	3,210
63	4499	Other cork & wood mans.	31	42	7	37	133	53	55	257
634	4411	Veneers, plywood,etc.	1,143	652	623	1,638	3,022	4,873	3,089	2,836
635	4421	Wooden hand carvings	54	66	15	27	49	73	37	117
64	4801	PAPER, PAPERBOARD & ARTICLES OF PAPER, PULP, OI PAPERBOARD	323	411	119	465	508	502	743	2,028
65		TEXTILE YARN, FABRICS, MADE-UP ARTICLES AND RELATED PRODUCTS	723	582	679	796	1,435	2,843	1,276	2,842
	5001	Flags of all nations	2	2	2	9	2	29	8	26
658	5051	Bed, table, kitchen, toilet (linen, drapes & blinds)	116	212	247	287	262	565	317	678
659	5041	Carpeting & textile coverings (inc. linoleum type cover from 1988)	280	145	139	163	732	1,753	523	1,522
	5099	Other made-up textile n.e.s.	6	13	15	71	91	154	106	85
652	5013	Textile mosquito netting	3	0	2	5	15	65	24	144
656	5012	Lace piece goods	17	1	3	0	-	1	3	2
	5021	Manufactured Irish linen from Ireland	1	6	2	2	3	12	0	19
	5022/3	Tapestry	151	38	39	46	48	25	24	77
	5024	Other textile piece goods	147	163	228	213	281	240	271	289
66		NON-METAL MINERAL MANUFACTURES N.E.S	8,754	3,892	3,261	13,400	36,085	88,424	42,375	55,613
661	2511	Cement	2,204	653	1,148	2,252	2,837	2,680	4,851	5,548
662	6801	Lime, refractory, fab.	3,476	1,674	595	8,620	30,034	81,356	33,279	45,241
665	7001	Crystal glassware	970	451	552	793	800	794	1,171	1,038
665	7002	Glassware not crystal	162	138	116	319	354	398	278	534
666	6901	Porcelain & chinaware	523	387	359	647	518	944	910	720
666	6902	Domestic pottery	119	37	60	105	92	112	176	228
666	6903	Statuettes	138	106	91	63	119	102	155	48
666	6911	Sanitary & plumbing fixtures	655	247	138	324	789	1,752	993	1,674
666	6919	Other ceramic household	464	187	59	93	228	256	328	236
	7199	Scrap of precious metals except gold	-	-	1	-	-	13	4	3
667	7121	Precious & semi precious	43	12	143	186	312	15	230	343

TABLE 4: IMPORTS BY UN SITC CLASSIFICATION (continuation)
2000 - 2007

SITC Rev.3	Tariff Code	COMMODITY	CI\$ thousands							
			2000	2001	2002	2003	2004	2005	2006	2007
67		IRON AND STEEL	139	21	33	43	174	884	14	171
	7201	Iron & steel bars, rods etc.	139	21	33	43	174	884	14	171
68	7401	NON-FERROUS METALS	28	2,304	-	217	36	60	43	10
69		MANUFACTURES OF METAL N.E.S.	2,491	1,283	1,145	2,781	3,260	6,270	5,424	7,914
691	7301	Structures & products (parts of iron, steel, aluminium)	819	405	642	1,104	1,313	1,838	2,469	3,326
696	7302	Cutlery, dishes of metal	120	39	58	117	131	398	286	253
697	7303	Metal mosquito netting	-	-	3	2	4	19	3	9
	7304	Fence wire	83	27	35	183	180	523	285	179
694	7305	Nails & wire staples	429	84	77	219	512	885	377	286
695	7306	Hand tools, non-elect.	679	362	323	547	907	2,250	1,547	1,882
	8302	Other metal goods n.e.s.	362	366	7	609	213	358	456	1,979
ALL MANUFACTURED GOODS CLASSIFIED CHIEFLY BY MATERIAL			14,549	9,822	7,590	21,711	47,097	107,756	56,243	75,590
7: MACHINERY AND TRANSPORT EQUIPMENT										
71		POWER GENERATING MACHINERY	538	248	1,074	2,545	3,677	4,188	2,002	2,430
	8401	Power generating machinery	335	185	250	1,947	2,201	1,369	653	914
	8501	Motors and generators, electricity production	203	63	39	25	714	2,053	793	689
	8507	Batteries lead acid for vehicles, boats etc.	-	-	785	573	763	766	556	826
72		ALL MACHINERY SPECIALIZED FOR PARTICULAR INDUSTRIES	2,767	2,942	643	2,761	6,651	8,242	7,389	6,566
	8402	Construction & mining machinery	2,281	2,483	473	2,119	5,266	5,493	6,188	4,425
	8499	Other Mechanical Appliances	473	424	87	623	1,347	2,713	1,191	1,981
	8706	Tractors, agricultural & accessories	2	33	82	15	28	23	8	57
	8403	Metal working machinery	12	2	1	4	11	12	3	103
74	8409	GENERAL INDUSTRIAL MACHINERY & EQUIPMENT & PARTS THEREOF	1,900	648	403	1,391	3,304	2,009	718	1,269
75		OFFICE MACHINES & AUTOMATIC DATA PROCESSING EQUIPMENT	4,952	2,842	3,112	3,848	4,807	5,812	3,369	4,380
	8411	ADP equipment & parts	3,253	2,323	2,252	2,766	3,206	3,859	1,884	1,807
	8412	Office machines & parts	1,699	520	860	1,082	1,602	1,954	1,485	2,573

FOREIGN TRADE STATISTICS REPORT 2007

**TABLE 4: IMPORTS BY UN SITC CLASSIFICATION (continuation)
2000 - 2007**

			CIS\$ thousands							
SITC Rev.3	Tariff Code	COMMODITY	2000	2001	2002	2003	2004	2005	2006	2007
76		TELECOMMUNICATIONS & SOUND RECORDING & REPRODUCING APPARATUS & EQUIPMENT	258	541	626	1,339	14,638	7,012	3,010	5,011
	8511	Portable radios & tape decks	101	87	87	38	141	51	57	54
	8512	Radios, record players	116	152	87	170	1,094	995	257	186
	8531	Telecommunications equip., TV & radio receivers (inc. satellite dishes)	41	301	452	1,131	13,402	5,967	2,696	4,771
										-
										-
77		ELECTRICAL MACHINERY, APPARATUS & APPLIANCES N.E.S., AND ELECTRICAL PARTS THEREOF	5,184	3,412	2,373	4,941	10,362	20,624	9,529	23,401
	8421	Domestic refrigerators	6	3	43	198	201	832	85	127
	8541	Power driven hand tools	166	110	107	214	696	1,555	1,014	816
	8551	Other electrical & non electrical equipment	1,798	1,451	1,199	2,309	7,224	16,586	4,950	10,353
	8561	Other electrical machines	3,215	1,847	1,023	2,220	2,240	1,651	3,480	12,105
78		ROAD VEHICLES	39,222	33,831	29,266	35,027	70,153	113,767	60,767	51,430
781	8701	Public transport	192	47	380	535	4,159	2,748	268	696
	8702	Motor cars up to \$20,000 CIF Value	30,742	26,379	16,004	21,504	37,761	65,482	30,525	26,109
	8703	Invalid carriages	37	9	-	85	27	76	16	67
	8704	Transportation vehicles	3,210	3,528	2,758	2,475	9,336	14,159	11,608	6,450
	8705	Motor cycles exceeding 90cc	2	6	67	134	221	523	479	363
	8707	Motor cars between \$20,001 and \$25,000 CIF Value	-	-	2,194	2,382	5,179	8,500	2,936	3,138
	8708	Motor cars between \$25,001 and \$30,000 CIF Value	-	-	1,909	1,293	2,960	4,872	1,398	1,872
	8709	Motor cars more than \$30,000 CIF Value	-	-	1,825	2,176	4,744	9,237	5,959	5,574
	8711	Motor vehicle parts	4,956	3,805	3,892	4,316	4,998	7,176	6,766	6,636
	8712	Parts of motor & pedal cycles	10	17	69	21	52	30	257	41
	8713	Vehicles not mechanically (Trailers and semi-trailers)	73	40	132	42	528	669	479	374
	8714	Motor cycles up to 90cc	-	-	37	64	187	293	77	111
79		AIRCRAFT AND ASSOCIATED EQUIPMENT & PARTS THEREOF, SHIPS, BOATS AND FLOATING STRUCTURES	104	232	1,473	2,997	3,721	6,530	8,076	7,293
	8801	Aircraft, helicopters, gliders & non-powered aircraft							28	51
	8901	Boats up to 18ft (excluding jet skis and waverunners)		-	132	658	223	750	607	763
	8902	Boats over 18ft	-	-	1,116	1,958	3,423	5,486	7,226	6,173
	8903	Jet skis, waverunners	104.4	231.6	224.4	380.8	75.3	294.5	215.1	306
ALL MACHINERY & TRANSPORT EQUIPMENT			54,926	44,695	38,970	54,848	117,314	168,185	94,861	101,781
8: MISCELLANEOUS MANUFACTURED ARTICLES										
81		SANITARY, PLUMBING, HEATING & LIGHTING FIXTURES & FITTINGS N.E.S	445	253	201	521	534	1,400	612	1,727
813	9401	Light fixtures, lamps, flashlights	445	253	201	521	534	1,400	612	1,727

FOREIGN TRADE STATISTICS REPORT 2007

**TABLE 4: IMPORTS BY UN SITC CLASSIFICATION (continuation)
2000 - 2007**

SITC Rev.3	Tariff Code	COMMODITY	Ct\$ thousands							
			2000	2001	2002	2003	2004	2005	2006	2007
82		FURNITURE & PARTS THEREOF	8,060	5,232	4,886	6,195	11,697	40,098	14,562	20,863
	9411	Chairs and other seats	15	46	7	2	13	452	79	88
	9419	Other furniture & parts	8,045	5,186	4,879	6,192	11,684	39,646	14,483	20,776
83		TRAVEL GOODS, HANDBAGS AND SIMILAR CONTAINERS	38	59	105	246	153	190	94	108
	4212	Travel goods not of leather	38	59	105	246	153	190	94	108
84		ARTICLES OF APPAREL AND CLOTHING ACCESSORIES	4,727	3,366	4,563	5,508	5,131	8,662	7,829	8,788
	6101	Clothing accessories of wool	11	11	16	11	8	55	85	91
	6102	Cotton gloves decorated with embroidery or lace	-	-	0	-	-	9	3	0
	6103	Leather clothing	254	84	151	68	175	340	437	428
	6111	Clothing & access. of silk	78	26	13	62	45	84	128	131
	6112	Clothing & access. of irish	3	1	2	2	8	59	65	39
	6191	Clothing & access. of other	4,224	3,025	4,350	5,145	4,516	7,189	6,713	7,665
	6199	Worn clothing	156	219	32	220	380	927	399	433
85	6401	ALL FOOTWEAR	762	497	621	1,205	1,100	619	818	1,498
87		PROFESSIONAL, SCIENTIFIC & CONTROLLING INSTRUMENT AND APPARATUS N.E.S.	31	12	24	36	126	112	293	62
	9001	Binoculars,micro & telescopes	24	11	24	35	111	111	289	61
	9099	Scientific instruments n.e.s.	8	1	0	1	15	0	4	1
88		PHOTOGRAPHIC EQUIPMENT AND SUPPLIES, OPTICAL GOODS N.E.S.; WATCHES & CLOCKS	8,954	7,722	12,254	15,875	14,784	15,075	20,897	19,612
	9003	Spectacles & contact lenses	263	186	313	514	442	668	987	762
	9011	Cameras, videos, lenses	1,885	421	458	1,028	1,015	1,145	1,778	1,273
	9012	Lights, floods, & flash	138	38	14	0	6	33	43	169
	9019	Projectors & supplies	97	139	44	77	72	73	24	32
	9101	Travel clocks, watches,	6,548	6,936	11,422	14,247	13,248	13,131	18,062	17,346
	9109	Other clocks & timepieces	22	2	4	10	2	24	4	31

FOREIGN TRADE STATISTICS REPORT 2007

**TABLE 4: IMPORTS BY UN SITC CLASSIFICATION (continuation)
2000 - 2007**

CI\$ thousands

SITC Rev.3	Tariff Code	COMMODITY	2000	2001	2002	2003	2004	2005	2006	2007
89		MISCELLANEOUS MANUFACTURED ARTICLES N.E.S.	212,931	171,654	135,707	220,166	285,191	252,911	414,946	348,976
891	9301	Arms & ammunition, parts & accessories thereof	17	3	3	7	10	28	109	83
892	4901	Reading materials	3,883	5,060	3,323	4,358	4,614	6,368	6,758	5,701
892	4902	Printed forms, stationery	1,131	783	1,003	1,260	1,008	1,370	652	2,230
893	3999	Articles of plastic	210	167	23	286	310	210	160	688
894	9501	Baby carriages, toys	101	79	77	213	172	183	220	257
894	9502	Sporting goods o.t. shooting	34	5	68	123	221	134	9	81
895	8301	Office supplies of metal	974	542	456	900	1,469	1,671	2,499	2,232
896	9701	Works of art, collectors pieces	42	548	24	98	18	37	19	16
896	9706	Antiques	187	173	184	510	69	135	3,246	242
897	7131	Articles of precious metal other than jewelry	14	6	63	52	279	9	16	0
897	7132	Jewelry containing coral	13	2	17	8	19	-	39	36
897	7133	Other jewelry of precious metal	3,455	2,868	4,136	4,474	6,741	3,115	9,221	8,618
897	7134	Other jewelry not of precious metal	29	20	27	45	66	26	77	135
897	9601	Jewel cases	3	9	3	1	2	18	22	14
897	7122	Pearls, natural, cultured & articles	8	-	-	-	-	-	2	-
898	9201	Musical instruments	108	263	94	110	206	445	895	543
898	8521	Records & tapes	249	153	160	99	145	78	118	42
899	9610	Smokers requisites	56	29	91	47	72	47	112	122
899	9611	Other miscellaneous articles nes.	116,760	49,608	53,449	123,330	205,832	181,418	334,155	260,908
900	9999	Duty Free Items	41,153	47,277	36,419	44,280	19,699	8,279	4,014	7,606
100		Items having 100% duty ¹	2	16	13	13	3	-	-	-
1000		Items imported by CUC Ltd. ¹	15,466	21,272	10,523	11,935	13,274	13,606	-	-
1500		Items having 15% duty ¹	6,267	8,526	6,561	4,121	648	-	-	-
2000		Items having 20% duty ¹	1,340	15,455	3,395	2,912	-	4	-	-
2122		Milk, fish, cheese, rice, beans, water, onions	5,005	1,576	700	855	1,749	3,768	12,746	19,241
2129		Meats, fruits & vegetables, detergents, soaps	1,472	4,394	4,150	4,790	7,529	11,913	13,873	14,602
2500		Items At 25% ¹	1,973	3,578	1,901	816	199	-	-	-
500		Items At 5%	2,626	1,193	1,724	1,105	1,425	364	157	28
4000		Items At 40% ¹	-	-	-	-	-	-	-	688
0001		Advertising materials, placecards, posters, signs	35	58	20	37	294	490	118	111
0002		Agricultural equipment of all kinds	50	15	26	60	165	159	358	441
0003		Articles imported/or out of bond for Governor's use	8	2	-	-	-	81	183	1
0004		Articles reimported into the Islands	23	1	-	95	97	53	114	19
0005		Baggage and household effects	3,469	2,299	1,912	2,401	5,258	3,527	4,855	4,933
0006		Building materials, goods and equipment for church	650	173	110	367	750	1,142	1,309	954
0007		Equipment/appliances for serious bodily disabled	54	31	56	79	93	142	79	137
0008		Equipment/requisites for school	604	300	443	936	2,189	3,749	6,006	6,973
0009		Commercial aircraft	141	77		9	15	49	181	415
0010		Commercial aircraft/equipment and parts	3,350	3,445	2,631	6,274	6,847	5,511	5,415	4,351
0011		Goods to be re-exported	451	513	1,320	1,412	395	328	3,159	2,275
0012		Packages and bags	323	481	246	754	1,623	2,564	2,008	2,041
0013		Paper for printing newspapers	169	200	53	247	273	253	305	617
0014		Patterns and samples with no commercial value	86	13	69	96	242	165	323	193
0015		Ships, boats, other vessels for International travel	94	52	67	359	1,033	1,144	889	1,087
0016		Equipment, parts, fuel for commercial ships	344	196	84	167	34	220	298	77
0017		Uniforms and equipment	10	10	6	1	1	3		16
0018		Unsolicited gifts	0	0	3	58	34	60	5	86
0019		War medals, decorations, tombstones	115	160	64	53	68	43	221	132
0020		Yachts, boats, other such crafts	377	22	10	13	0	-		
		ALL MISCELLANEOUS MANUFACTURED ARTICLES	235,947	188,794	158,362	249,751	318,716	319,066	460,051	401,634

TABLE 4: IMPORTS BY UN SITC CLASSIFICATION (continuation)
2000 - 2007

SITC Rev.3	Tariff Code	COMMODITY	CI\$ thousands							
			2000	2001	2002	2003	2004	2005	2006	2007
9: COMMODITIES AND TRANSACTIONS NOT CLASSIFIED ELSEWHERE										
91	9800	POSTAL PACKAGES	-	1	-	1,313	1,120	1,380	1,580	1,477
93	9900	SPECIAL TRANSACTIONS & COMMODITIES ¹ NOT CLASSIFIED ACCORDING TO KIND	-	-	-	2,148	-	1,284	-	90
96	7111	COINS, OTHER THAN GOLD, NOT BEING OF LEGAL TENDER	31,046	423	56	219	48	-	54	251
97	7101	GOLD COIN	-	238	16	16	3,300	-	176	-
98	9801	ITEMS FOR BRAC (PORTS 6/7) & AIR TERMINAL/COURIE	134,993	168,828	184,810	92,500	66,555	192,407	79,136	51,237
ALL COMMODITIES AND TRANSACTIONS NOT CLASSIFIED ELSEWHERE			166,039	169,489	184,882	96,197	71,022	195,071	80,946	53,054
TOTAL CAYMAN ISLANDS IMPORTS			574,918	514,540	496,045	555,979	724,737	990,403	888,700	881,767
(%) CHANGE OVER PREVIOUS YEARS			27%	-11%	-4%	12%	30%	37%	-10%	-1%

Notes:

1 Changes in 2006 and 2007 are mainly due to a reclassification of at least some items.

Source: Economic and Statistics Office, Cayman Islands Government

**TABLE 4A: Imports by SITC* Sections
2000 - 2007**

Section	(Ct\$000's), percentage of total							
	2000	2001	2002	2003	2004	2005	2006	2007
0 Food & live animals	29,696 5.2%	20,719 4.0%	24,379 4.9%	43,941 7.9%	58,426 8.1%	53,267 5.4%	44,877 5.0%	61,025 6.9%
1 Beverages & Tobacco	16,568 2.9%	21,334 4.1%	17,534 3.5%	27,025 4.9%	17,139 2.4%	35,073 3.5%	44,347 5.0%	46,837 5.3%
2 Crude Materials	5,496 1.0%	2,310 0.4%	3,381 0.7%	5,171 0.9%	7,474 1.0%	13,680 1.4%	11,240 1.3%	11,237 1.3%
3 Petroleum Products (including Gas)	40,253 7.0%	49,420 9.6%	50,405 10.2%	43,171 7.8%	70,601 9.7%	76,220 7.7%	70,035 7.9%	102,910 11.7%
4 Animal & Vegetable Oils, Fats and Waxes	55 0.0%	40 0.0%	18 0.0%	1 0.0%	131 0.0%	36 0.0%	5 0.0%	164 0.0%
5 Chemical & related products	11,390 2.0%	7,916 1.5%	10,526 2.1%	14,164 2.5%	16,816 2.3%	22,051 2.2%	26,093 2.9%	27,536 3.1%
6 Manufactured Goods Classified Chiefly by Materials	14,549 2.5%	9,822 1.9%	7,590 1.5%	21,711 3.9%	47,097 6.5%	107,756 10.9%	56,243 6.3%	75,590 8.6%
7 Machinery & Transport equipment	54,926 9.6%	44,695 8.7%	38,970 7.9%	54,848 9.9%	117,314 16.2%	168,185 17.0%	94,861 10.7%	101,781 11.5%
8 Miscellaneous Manufactured Articles	235,947 41.0%	188,794 36.7%	158,362 31.9%	249,751 44.9%	318,716 44.0%	319,066 32.2%	460,051 51.8%	401,634 45.5%
9 Commodities & Transactions ¹ Not classified elsewhere	166,039 28.9%	169,489 32.9%	184,882 37.3%	96,197 17.3%	71,022 9.8%	195,071 19.7%	80,946 9.1%	53,054 6.0%
ALL IMPORTS	574,918	514,540	496,045	555,979	724,737	990,403	888,700	881,767
Imports Including Fuels	100%	100%	100%	100%	100%	100%	100%	100%

Notes:

¹ Imports from 2000 to 2005 were taken from the customs tariff system. Section 9 could be grossly overstated due to improper tariff classification

*SITC (Standard International Trade Classification)

Source: Economics and Statistics Office, Cayman Islands Government

**TABLE 5: QUANTITIES AND AVERAGE CIF UNIT VALUES
FOR SELECTED IMPORTS
2000 - 2007**

SITC rev3	Tariff Code	Commodity	Unit Year	Quantity (000s)	Value (C\$000s)	CIF unit (C\$)
112.1	2223	Wine Coolers	2000 Litres	26	31	1.19
			2001	94	199	2.12
			2002	75	53	0.71
			2003	418	610	1.46
			2004	29	42	1.46
			2005	197	287	1.46
			2006	20	20	1.00
			2007	29	29	1.00
112.3	2221	Beer,Ale, & Other malt liquors	2000 Litres	3,814	4,538	1.19
			2001	3,734	4,443	1.19
			2002	3,769	2,714	0.72
			2003	3,621	4,309	1.19
			2004	1,984	2,361	1.19
			2005	5,083	6,049	1.19
			2006	4,993	5,143	1.03
			2007	4,662	4,802	1.03
112.2&4	2241	Spirits,unsweetened,<50%	2000 Litres	324	4,584	14.17
			2001	319	1,816	5.69
			2002	310	2,008	6.47
			2003	255	1,647	6.45
			2004	139	898	6.45
			2005	326	2,101	6.45
			2006	435	3,240	7.45
			2007	393	2,926	7.45

**TABLE 5: QUANTITIES AND AVERAGE CIF UNIT VALUES
FOR SELECTED IMPORTS (continuation)
2000 - 2007**

SITC rev3	Tariff Code	Commodity	Unit Year	Quantity (000s)	Value (C\$000s)	CIF unit (C\$)
33	2701	Fuels	2000 Imp.gls	38,479	39,315	1.02
			2001	44,282	48,093	1.09
			2002	40,678	49,393	1.21
			2003	35,981	41,629	1.16
			2004	46,959	68,976	1.47
			2005	39,383	64,202	1.63
			2006	35,566	67,007	1.88
			2007	49,506	102,227	2.06
34	2751	Gas (natural etc)	2000 Imp.gls	1,395	1,113	0.80
			2001	1,050	1,071	1.02
			2002	998	818	0.82
			2003	1,020	1,096	1.07
			2004	900	1,096	1.22
			2005	1,050	1,428	1.36
			2006	1,500	2,109	1.41
			2007	1,500	2,109	1.41
661.2	2511	Cement	2000 Lbs	65,000	2,203	0.034
			2001	18,500	653	0.035
			2002	38,600	1,148	0.030
			2003	77,200	2,252	0.029
			2004	91,250	2,837	0.031
			2005	81,500	2,680	0.033
			2006	81,298	4,852	0.060
			2007	91,255	5,548	0.061
781	8702	Motor Vehicles (Cars, Trucks)	2000 Number	2.787	33,942	12,179
			2001	2.545	29,884	11,742
			2002	2.536	24,903	9,820
			2003	3.354	29,831	8,894
			2004	5.172	59,981	11,597
			2005	8.407	98,466	11,712
			2006	3.983	60,767	15,257
			2007	2.746	32,223	11,735

Note:

Conversion factors:

1 imperial gallon = 4.54 litres; 1 lb = .45 kilogrammes

Source: Economic and Statistics Office

**TABLE 6: IMPORTS BY MAJOR COUNTRIES OF ORIGIN
2000 - 2007**

Country	<i>(CIS\$M), percent of total</i>							
	2000	2001	2002	2003	2004	2005	2006	2007
United States ¹	419.8 72.9%	363.5 70.6%	340.3 68.5%	399.5 71.8%	561.1 77.3%	757.8 76.5%	656.6 73.9%	657.6 74.6%
Netherlands Antilles ²	39.3 6.8%	48.1 9.3%	49.4 9.9%	36.0 6.5%	69.2 9.5%	85.6 8.6%	73.0 8.2%	74.0 8.4%
Japan	3.0 0.5%	2.9 0.6%	2.7 0.5%	7.5 1.3%	5.2 0.7%	10.5 1.1%	6.3 0.7%	7.3 0.8%
United Kingdom	3.2 0.6%	3.1 0.6%	4.0 0.8%	6.9 1.2%	5.3 0.7%	6.9 0.7%	4.5 0.5%	5.5 0.6%
Jamaica	4.4 0.8%	2.3 0.4%	3.0 0.6%	2.5 0.4%	4.2 0.6%	6.9 0.7%	4.5 0.5%	5.5 0.6%
Cuba	1.7 0.3%	0.9 0.2%	2.0 0.4%	3.7 0.7%	1.5 0.2%	- 0.0%	3.9 0.4%	4.9 0.6%
Canada	1.7 0.3%	2.3 0.4%	1.8 0.4%	2.9 0.5%	3.5 0.5%	6.3 0.6%	2.6 0.3%	3.6 0.4%
Switzerland	1.3 0.2%	2.6 0.5%	3.7 0.7%	5.6 1.0%	3.7 0.5%	4.2 0.4%	1.8 0.2%	2.8 0.3%
Germany	0.8 0.1%	3.0 0.6%	1.5 0.3%	1.1 0.2%	1.8 0.2%	1.6 0.2%	1.7 0.2%	2.7 0.3%
Panama	0.9 0.2%	1.7 0.3%	3.3 0.7%	1.4 0.3%	1.3 0.2%	- 0.0%	1.4 0.2%	2.4 0.3%
Barbados	0.3 0.1%	0.6 0.1%	0.4 0.1%	1.1 0.2%	1.1 0.2%	2.0 0.2%	0.9 0.1%	1.9 0.2%
Mexico	0.7 0.1%	0.2 0.0%	0.4 0.1%	0.8 0.1%	0.6 0.1%	2.4 0.2%	0.7 0.1%	1.7 0.2%
South Korea	0.1 0.0%	0.1 0.0%	0.7 0.1%	0.8 0.1%	0.5 0.1%	1.3 0.1%	0.7 0.1%	1.7 0.2%
France	0.3 0.1%	0.2 0.0%	0.4 0.1%	1.2 0.2%	0.8 0.1%	0.7 0.1%	0.6 0.1%	1.6 0.2%
Italy	0.2 0.0%	0.3 0.1%	0.9 0.2%	1.1 0.2%	0.6 0.1%	0.5 0.1%	0.3 0.0%	1.3 0.1%
Ireland	0.0 0.0%	0.1 0.0%	0.0 0.0%	0.0 0.0%	0.0 0.0%	8.0 0.8%	0.3 0.0%	1.3 0.1%
Netherlands	0.2 0.0%	0.2 0.0%	0.1 0.0%	0.3 0.1%	0.2 0.0%	- 0.0%	0.2 0.0%	1.2 0.1%

See next page for continuation

TABLE 6: IMPORTS BY MAJOR COUNTRIES OF ORIGIN, cont'd

Country	2000	2001	2002	2003	2004	2005	2006	2007
Bahamas	0.1 0.0%	0.3 0.1%	0.3 0.1%	0.1 0.0%	0.3 0.0%	- 0.0%	0.2 0.0%	1.2 0.1%
Sweden	0.1 0.0%	4.5 0.9%	0.2 0.0%	1.0 0.2%	0.9 0.1%	0.5 0.1%	0.1 0.0%	1.1 0.1%
Brazil	0.0 0.0%	0.0 0.0%	0.1 0.0%	0.1 0.0%	0.1 0.0%	- 0.0%	0.1 0.0%	1.1 0.1%
Puerto Rico	0.2 0.0%	0.4 0.1%	0.3 0.1%	0.3 0.1%	0.2 0.0%	- 0.0%	0.1 0.0%	1.1 0.1%
Belgium	0.0 0.0%	0.0 0.0%	0.1 0.0%	0.1 0.0%	0.0 0.0%	- 0.0%	- 0.0%	1.0 0.1%
Costa Rica	0.0 0.0%	0.0 0.0%	0.0 0.0%	0.6 0.1%	0.0 0.0%	0.3 0.0%	0.0 0.0%	1.0 0.1%
Other ³	99.3 17.3%	79.7 15.5%	83.8 16.9%	87.5 15.7%	66.6 9.2%	96.9 9.8%	133.0 15.0%	106.1 12.0%
TOTAL IMPORTS	575.7 100%	515.1 100%	496.6 100%	556.8 100%	725.9 100%	990.4 100%	888.7 100%	881.8 100%

Notes:

- ¹ These import figures from the USA tend to be overstated while those from other countries tend to be underestimated, due to the shipment of Cayman Islands bound imports through Florida.
- ² Most of the oil imported from Curacao, Netherlands Antilles originates from Venezuela, although some come from elsewhere (eg. United States & Trinidad and Tobago).
- ³ The figures for other countries were taken from the customs database and could be overstated due to misclassification of country codes.

Source: Economic and Statistics Office, Cayman Islands Government

**TABLE 7: IMPORTS BY PORT
2000-2007**

	<i>(CIS\$million), percent of total</i>							
	2000	2001	2002	2003	2004	2005	2006	2007
George Town Docks	358.1 62.2%	343.0 66.6%	340.2 68.5%	392.2 70.4%	522.7 72.0%	761.2 76.9%	638.5 71.8%	678.5 76.9%
Oil Terminal	39.3 6.8%	48.1 9.3%	49.4 9.9%	41.6 7.5%	69.0 9.5%	73.8 7.5%	67.0 7.5%	102.2 11.6%
Owen Roberts Airport	162.9 28.3%	107.6 20.9%	91.5 18.4%	111.7 20.1%	122.2 16.8%	139.0 14.0%	170.0 19.1%	88.6 10.1%
George Town Parcel Post	1.6 0.3%	1.4 0.3%	1.4 0.3%	1.3 0.2%	1.1 0.2%	1.4 0.1%	1.6 0.2%	1.5 0.2%
Cayman Brac and Little Cayman	13.8 2.4%	15.0 2.9%	14.0 2.8%	9.9 1.8%	11.0 1.5%	15.0 1.5%	11.7 1.3%	11.0 1.2%
TOTAL	575.7 100%	515.1 100%	496.6 100%	556.8 100%	725.9 100%	990.4 100%	888.7 100%	881.8 100%
of which Duty Free	115.3	76.6	55.5	81.8	75.4	75.9	84.2	59.8
Percent of Total	20.0%	14.9%	11.2%	14.7%	10.4%	7.7%	9.5%	6.8%
Imports excluding oil	536.4	467.0	447.2	515.2	656.9	916.6	821.7	779.6
yr/yr percent change	26.1%	-12.9%	-4.2%	15.2%	27.5%	39.5%	-10.3%	-5.1%

TABLE 8: EXPORTS BY SITC SECTIONS
2003 - 2007

Section	(CIS\$000's), percent of total				
	2003	2004	2005	2006	2007
0 Food & live animals	4,108 30.9%	1,530 11.3%	2,142 26.1%	3,071 21.9%	1,013 11.6%
1 Beverages & Tobacco	33 0.3%	3 0.0%	6 0.1%	271 1.9%	377 4.3%
2 Crude Materials	1,454 10.9%	2,408 17.7%	284 3.5%	325 2.3%	1,826 21.0%
3 Petroleum Products and Gas	3 0.0%	3 0.0%	5 0.1%	34 0.2%	20 0.2%
4 Animal & Vegetable Oils, Fats and Waxes	- 0.0%	- 0.0%	90 1.1%	- 0.0%	403 4.6%
5 Chemical & related products	- 0.0%	72 0.5%	126 1.5%	45 0.3%	9 0.1%
6 Manufactured Goods Classified Chiefly by Materials	36 0.3%	1,481 10.9%	1,988 24.2%	175 1.2%	644 7.4%
7 Machinery & Transport Equipment	335 2.5%	612 4.5%	213 2.6%	898 6.4%	1,360 15.6%
8 Miscellaneous Manufactured Articles	638 4.8%	1,247 9.2%	2,729 33.3%	1,751 12.5%	1,199 13.8%
9 Commodities & Transactions ¹ Not classified elsewhere	6,673 50.2%	6,240 45.9%	619 7.5%	7,453 53.1%	1,855 21.3%
Domestic Exports	13,281	13,596	8,200	14,022	8,706
Re-Exports	6,182	6,155	40,423	6,882	12,747
All Exports	19,463	19,751	48,623	20,904	21,453
(of which to USA)	14.6	19.1	44.9	18.5	20.1
(of which to UK)	4.9	0.7	3.7	2.4	1.4

Notes:

1 Includes all other items shipped.

SITC (Standard International Trade Classification)

Source: US Census Bureau, www.Uktradeinfo website, Economics and Statistics Office, Cayman Islands Government